

## NHDC Allotments Newsletter

May 2011

### Welcome to the May 2011 Allotments Newsletter

#### Estimates of NHDC Allotment Service Income & Expenditure 2011/12

Grounds Maintenance	1,180
Variation Orders	8,990
Allotment Site Rents	2,498
Water Rates (est)	3,948
Printing costs (est)	510
Postage (est)	150
Allotments computer system	290
Baldock Allotments Association agreement	2,200
Parks Development	9,090
Management Support Unit (MSU)	1,440
Document Centre (est)	250
Financial Services	6,310
Customer Service Centre (CSC)	7,150
Capital Financing	690
<b>Total Expenditure</b>	<b>£44,696</b>
<b>Total Income from rents (est)</b>	<b>£40,000</b>
<b>Estimated deficit</b>	<b>(£4,696)</b>

To clarify some of the headings -

Maintenance & Variation Orders cover flytipping removal, grass/hedgecutting, roadway/fence/gate/lock repairs/signage, water/taps repairs

Allotment Rents - 8 of the 13 sites are rented from other landowners.

Parks, MSU, CSC covers gross staff costs allocated to allotments for promotion, management, maintenance, allocation of plots and administration of the allotments service,

Financial Services/Legal covers recharge of staff time associated with land lease agreements, tenant agreements, legal matters concerning allotments and contractors tenant and contractor invoices, receiving and banking payments, chasing non payments.

The figures do not show the investment in allotments from the Allotments Strategy 2004-10 to the tune of £80,000 over the five year period.

It does not show financial investment from other sources such as Letchworth Area Committee grant of £1700 towards the opening of Woolgrove Allotments, £900 from the Community Safety Team for the SelectaDNA site security initiative, £500 from Baldock Area Committee for enhancements at North Road Allotments or the £15,000 invested at North Rd from

various sources for the replacement of the rabbit-proof fencing and opening up 23 new plots to alleviate waiting lists.

Also not shown are voluntary contributions to the allotment service such as the LDGA and local scouts replanting some of the Wilbury allotments shelter break, help to tenants with disabilities and the construction of the children's plots at Wilbury and North Rd by the Probation Service and roadway repairs, tree works, hedgeworks and the construction of a soil toilet! by the Buzzworks and Honeyworks Team. And of course the time and commitment from site representatives is entirely voluntary.

#### Site Representatives

Site representatives are most willing to help out with information on the local Allotment Associations, local growing conditions and reporting incidents. They cannot help with plot allocations – for this please contact Allotment Administration on tel. 01462 474000 or e-mail [service@north-herts.gov.uk](mailto:service@north-herts.gov.uk)

Clothall Rd	Restricted data	
North Rd	Mick Camp	01462 893418
Burford Way	Andy Knight	01462 631316
Old Hale Way	Martin Alexander	01462 440845
Pirton Rd	Steven Webster	01462 431390
Ransoms	M Summerhayes	01462 431292
Hillbrow	Bina de Wilde	01462 637707
Norton	Gordon Whitfield	01462 630448
Pryor Way	Annie Burcombe	01462 632447
Radburn	Clive Collins	01462 676732
Runnalow	Jo Tofts	01462 677465
Wilbury	Roy Butt	01462 677123
Woolgrove	Vacant	

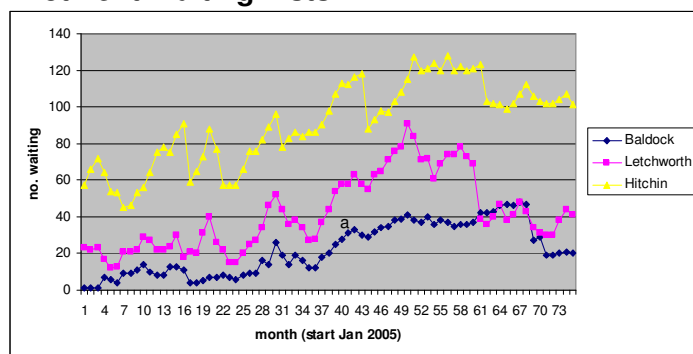
#### Site reports

Reports of vandalism and shed break-ins at Hillbrow, Pryor Way and Woolgrove.

The Seventh Letchworth St Thomas Cubs helped the LDGA to plant 105 trees donated by the Woodland Trust at Wilbury Allotments. They included hazel, hawthorn, birch, blackthorn, rowan and oak.

Letchworth Area Committee provided a grant for tree guards and supports. The project is part of a national initiative to plant more than 200,000 trees this spring with more planned for the future.

## Allotment Waiting Lists



Plots are available for immediate take up at Woolgrove, Letchworth and North Road, Baldock.

## Allotments Occupancy

Site	Vacant	Under Offer	Number waiting
Clothall	0	34b,38b	20
North Road	62b,64b 65, 74-81	0	3
Burford Way	0	20c,24a, 44a	27
Old Hale Way	0	11a,73b 90a,103	47
Pirton Road	0	19b,28a, 41b	9
Ransoms	0	11a	18
Hillbrow		11b,18a 18d,19a	8
Norton	0	5b,48b	3
Pryor Way	0	6b	3
Radburn Way	0	2a,	5
Runnalow	0	11a,11b 21b,26a 26b,37a, 41b,54a	10
Wilbury	0	6a,10a 31b,38a, 44a	12
Woolgrove	1-6, 8,27- 33,35, 40	10,13	0

## 2011/12 Maintenance Tasks

### Burford Way

Repair 2 pipe bursts	completed
Replace tap	completed

### Old Hale Way

Weedkill roadways	quotes
-------------------	--------

### Pirton Road

--	--

### Ransoms

Repair burst pipe	completed
Weedspray pathway	completed

### Hillbrow

Repair pipe burst	completed
Replace tap	completed

### Norton

--	--

### Pryor Way

Extra standpipe x 2	completed
New site name board	quotes
New padlock x 2	completed
Chainlink fence repair	ordered

### Radburn

Weedspray car park	quotes
--------------------	--------

### Runnalow

--	--

### Wilbury

Weedspray roadways	quotes
Replace combination lock	completed
Infill shelter break planting	completed
Chainlink fence repair	completed

### Woolgrove

Install new water supply	completed
Install 2 water troughs	completed
Install further 2 water troughs	ordered
Replace combination lock	completed